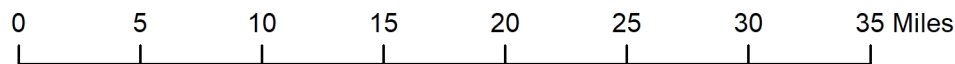
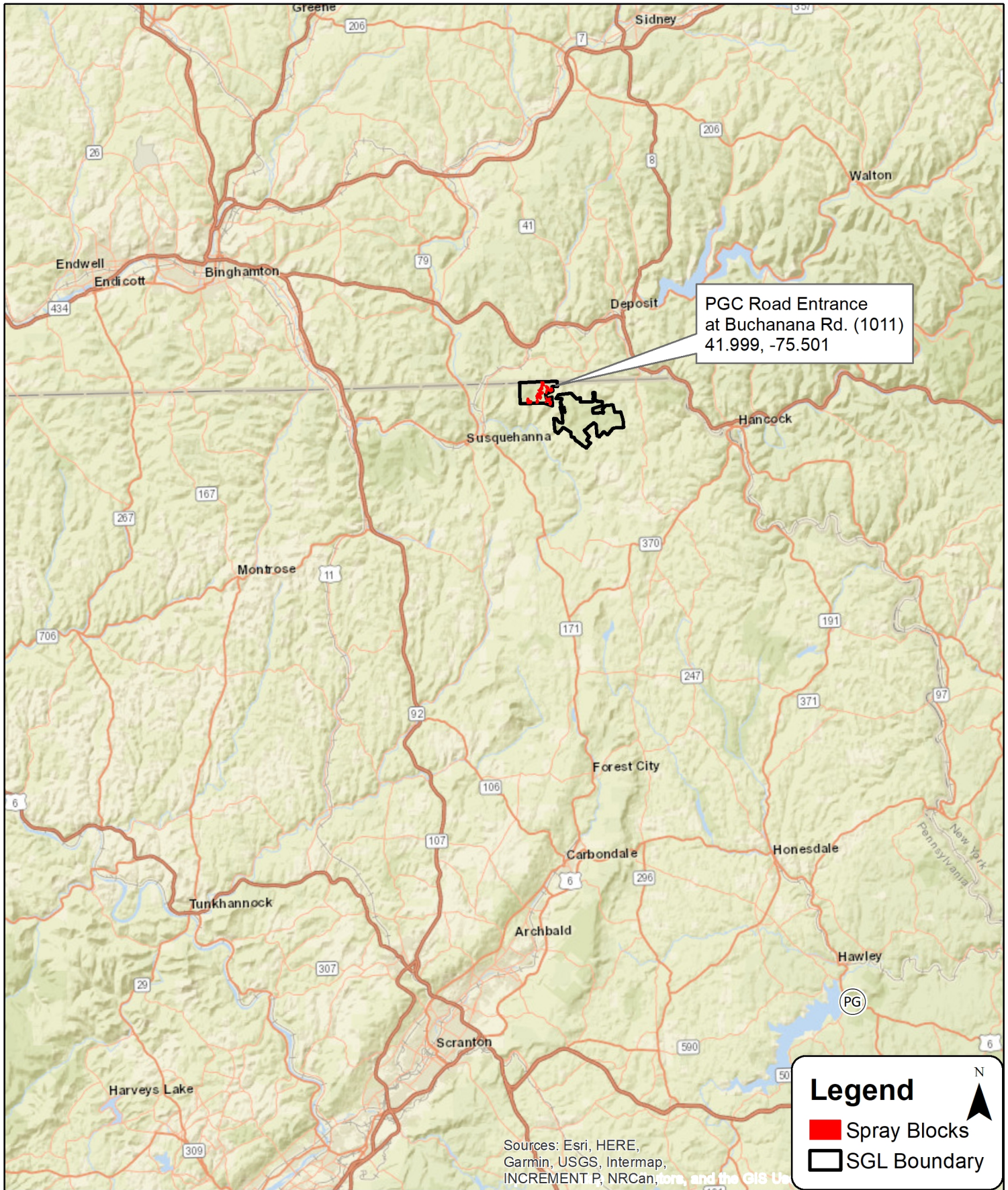


Round Hill Herbicide 070-2019 Location Map



1 inch = 8 miles



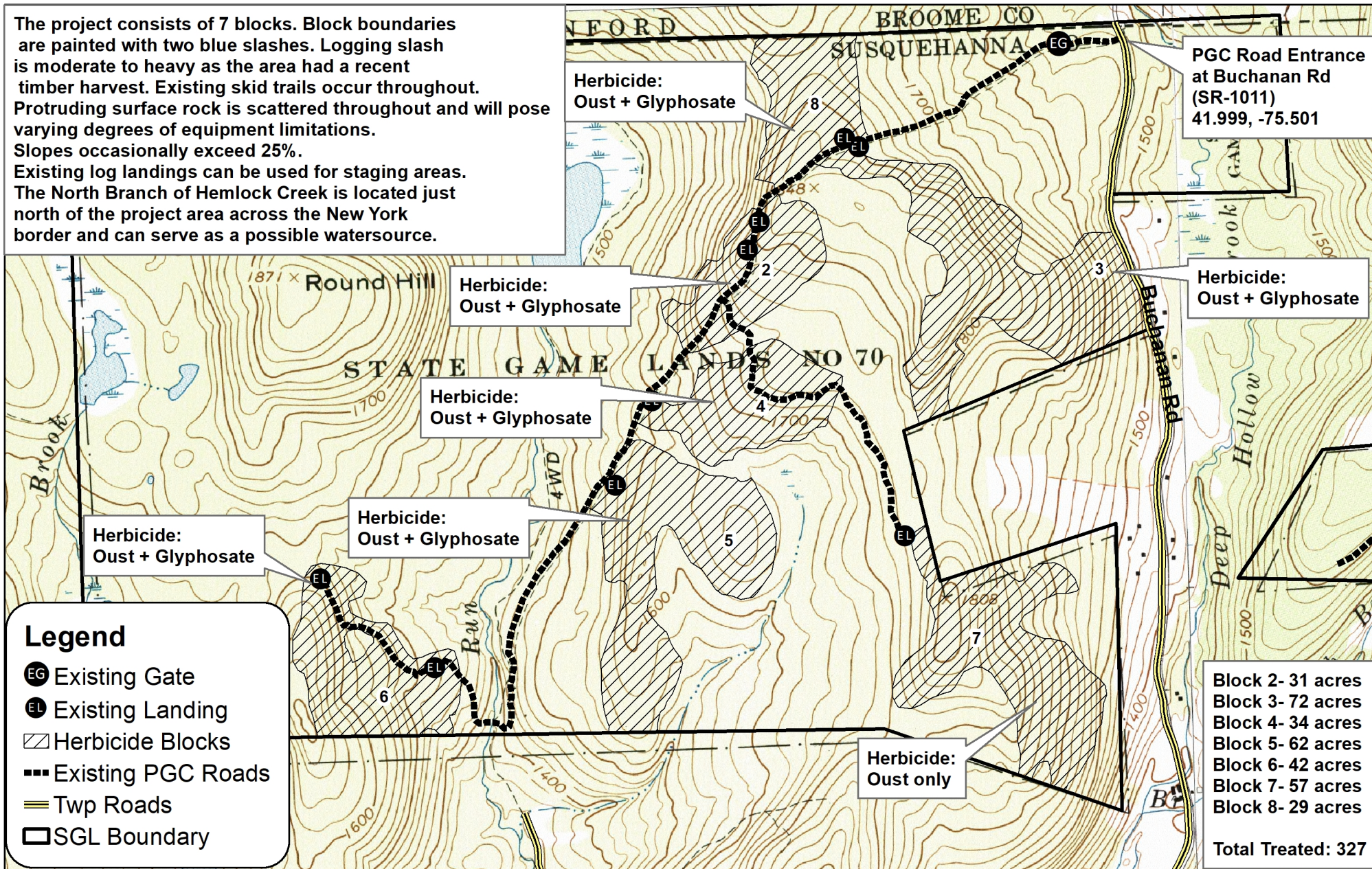
Round Hill Herbicide State Game Lands 070 Susquehanna County Harmony Township



1 inch = 1,320 feet



The project consists of 7 blocks. Block boundaries are painted with two blue slashes. Logging slash is moderate to heavy as the area had a recent timber harvest. Existing skid trails occur throughout. Protruding surface rock is scattered throughout and will pose varying degrees of equipment limitations. Slopes occasionally exceed 25%. Existing log landings can be used for staging areas. The North Branch of Hemlock Creek is located just north of the project area across the New York border and can serve as a possible water source.



PGC Road Entrance at Buchanan Rd (SR-1011)
41.999, -75.501

Herbicide: Oust + Glyphosate

Herbicide: Oust + Glyphosate

Herbicide: Oust + Glyphosate

Herbicide: Oust + Glyphosate

Herbicide: Oust + Glyphosate

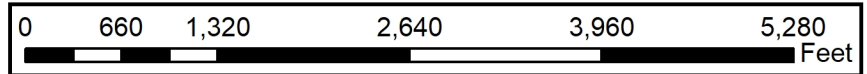
Herbicide: Oust only

- Block 2- 31 acres
- Block 3- 72 acres
- Block 4- 34 acres
- Block 5- 62 acres
- Block 6- 42 acres
- Block 7- 57 acres
- Block 8- 29 acres

Total Treated: 327

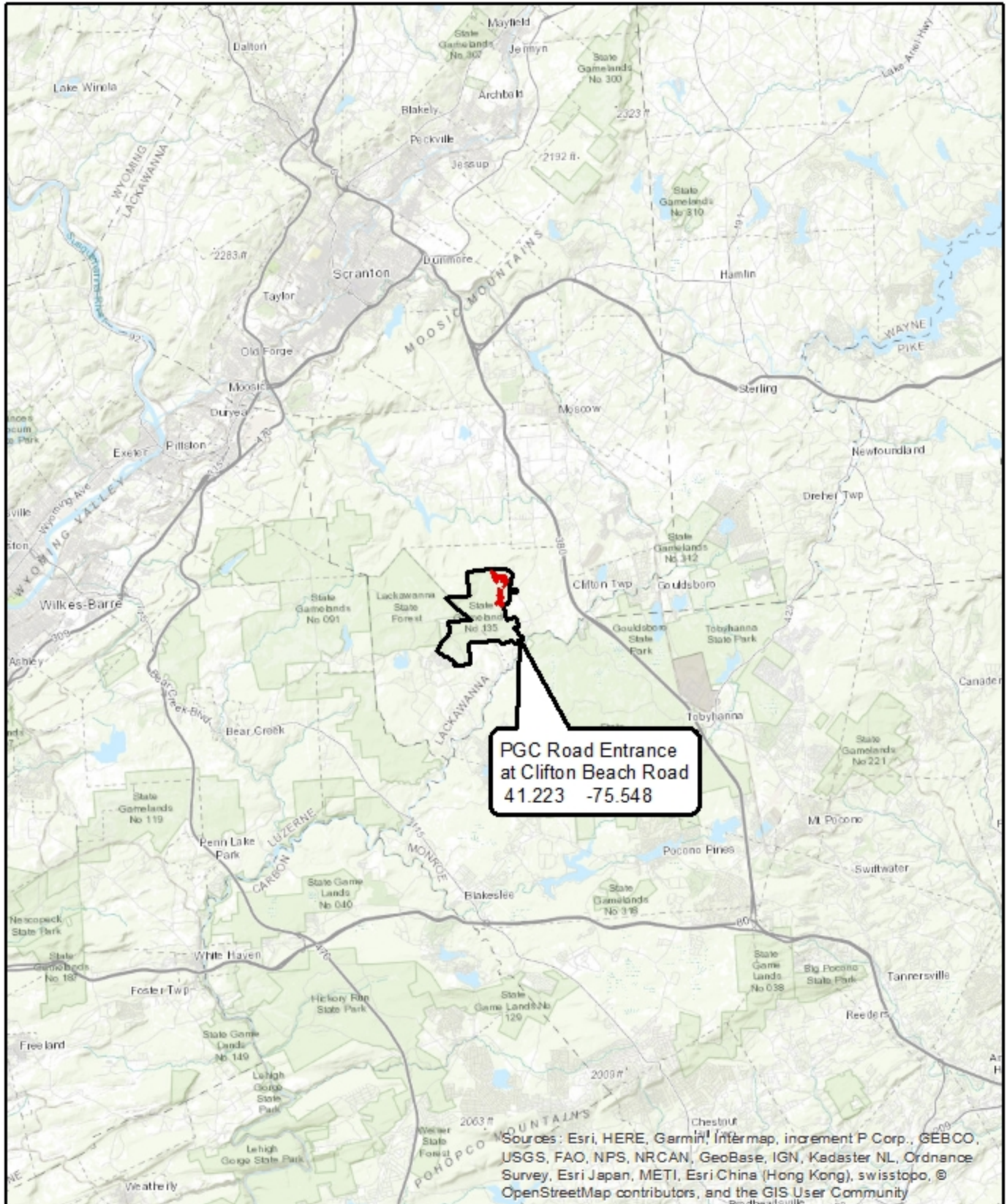
Legend

- EG Existing Gate
- EL Existing Landing
- ▨ Herbicide Blocks
- Existing PGC Roads
- == Twp Roads
- SGL Boundary



Einhorn Broadcast Herbicide Location Map

SGL 135
Lackawanna County
Clifton Township

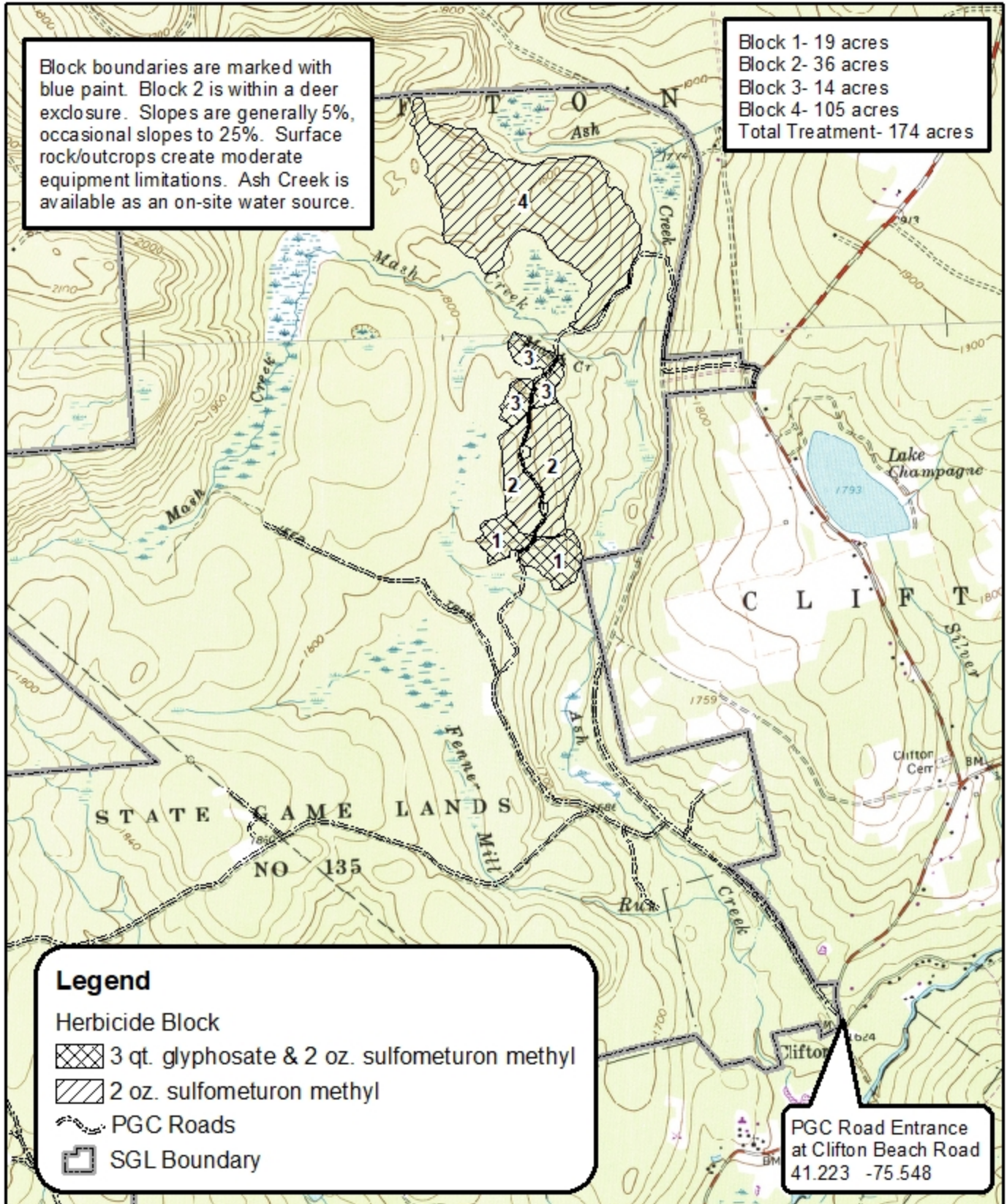


Einhorn Broadcast Herbicide Treatment Map

SGL 135
Lackawanna County
Clifton Township

Block boundaries are marked with blue paint. Block 2 is within a deer enclosure. Slopes are generally 5%, occasional slopes to 25%. Surface rock/outcrops create moderate equipment limitations. Ash Creek is available as an on-site water source.

Block 1- 19 acres
Block 2- 36 acres
Block 3- 14 acres
Block 4- 105 acres
Total Treatment- 174 acres



0 1,000 2,000 4,000 6,000 Feet

